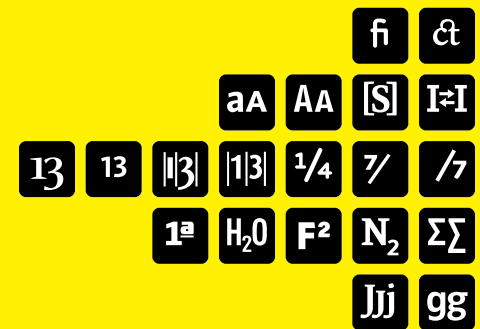


FONTFONT OPENTYPE®



## FONTFONT INFO GUIDE

# FF Kievit OT Italic FF Kievit Pro Italic

VERSION 01 | April 2006



## SECTIONS

- A | Introduction to OpenType®
- B | Font and Designer Information
- C | Supported Layout Features
- D | Language Support
- E | Type Specimens

## SECTION A

# INTRODUCTION TO OPENTYPE®

### WHAT IS OPENTYPE?

OpenType® is a cross-platform font file format developed jointly by Adobe and Microsoft. The two main benefits of the OpenType format are its cross-platform compatibility (the same font file works on Macintosh and Windows computers), and its ability to support widely expanded character sets and layout features, which provide rich linguistic support and advanced typographic control.

OpenType fonts can be installed and used alongside PostScript® Type 1 and TrueType fonts.

The range of supported layout features may differ in the various FontFont OpenType packages, therefore each OpenType package will be accompanied by this FF Info Guide listing the layout features supported by this specific font package.

You'll find a glossary of all available OpenType layout features in Section B of the general FF OpenType User Guide.

---

Please see the FontFont OpenType® User Guide  
at <http://www.fontfont.com/opentype>

©FS1, 2005 All rights reserved.  
All information in this document is provided "AS IS" without  
warranty of any kind, either expressed or implied, and is subject  
to change without notice.

All trademarks mentioned in this document are the trademarks  
or registered trademarks of their respective holders.

You may reproduce and distribute this document as long as you  
do not remove FS1's copyright information and do not make any  
changes in the document.

# Handgloves

## ABOUT FF KIEVIT OT ITALIC

The initial work on Kievit occurred in 1995 as part of a school project and was finished several years later for a corporate client of Method Inc., a design firm in San Francisco. The openness of the characters and their proportions makes it an ideal typeface for use in small print. The clarity of classic sans serif faces (Frutiger and Univers) and the humanistic characteristics of old styles (Garamond and Granjon) were the inspiration for this contemporary design that is equally at home in a headline or a body of text. The FF Kievit family includes nine weights, true italics, old style figures and small caps - everything necessary for even the most demanding typography.

## ABOUT MICHAEL ABBINK

Mike has been designing letter forms since 1992. His first completed typeface, FF Kievit, is used around the world, and has won awards from the ISTD and ATypI. Recently, through his work at Wolff Olins, he developed a custom typeface for GE (GE Inspira) that is an integral element of their new global branding program. Mike has also applied his love for letter forms to logotype designs for numerous corporate clients throughout his career. He continues to develop typefaces in his spare time, and plans to introduce a new typeface next spring. Mike earned two BFAs: one in Fine Arts, and one in Graphic Design and Packaging from Art Center in Pasadena. He then went to work for Meta Design San Francisco. Among his successes at Meta: designing retail environments for Nike, developing an award-winning IDEO website, and creating the identity for the Fuse98 design conference in San Francisco. In March 1999, Mike co-founded Method, Inc., a San Francisco-based web and graphic design firm. Acting as creative director, Mike developed or influenced identity and website programs for numerous clients, including Gucci, MoMA, Adobe and Autodesk. Mike then tried his hand at life on the client side. As an art director at Apple, he contributed to new packaging designs for the new Powerbooks, iSight, OSX Panther, AppleCare and the first G5. Shifting to a focus on corporate identity, he then led a company-wide identity evolution. Mike is currently a Design Director at Wolff Olins San Francisco, a branding consultancy. During his time at Wolff Olins, Mike has had the chance to create and produce new product programs for Knoll, develop print collateral for a global brand evolution of PwC, and apply his design skills to a variety of global brands.

FONTFONT OPENTYPE®

EXAMPLES



STYLISTIC SET 1

*g&k* ▶ *g&k*



STANDARD LIGATURES

*fi* ▶ *fi*



DISCRETIONARY LIGATURES

*fb* ▶ *fb*  
*ffb* ▶ *ffb*



SMALL CAPITALS

*small* ▶ *SMALL*



SMALL CAPITALS FROM  
CAPITALS

*CAPS* ▶ *CAPS*



CASE-SENSITIVE FORMS

*(A[I»* ▶ *(A[I»*



CAPITAL SPACING

*HOH* ▶ *HOH*



OLDSTYLE FIGURES

*167* ▶ *167*  
*167* ▶ *167*

## EXAMPLES

13

LINING FIGURES

167 ▶ 167  
167 ▶ 167

||3|

PROPORTIONAL FIGURES

167 ▶ 167  
167 ▶ 167

|1|3|

TABULAR FIGURES

167 ▶ 167  
167 ▶ 167

1/4

FRACTIONS

1/2 ▶ ½

7/

NUMERATORS

123/ ▶ 123/

/7

DENOMINATORS

/789 ▶ /789

1<sup>a</sup>

ORDINALS

1a20 ▶ 1<sup>a</sup>2<sup>0</sup>

H<sub>2</sub>O

SCIENTIFIC INFERIORS

CO<sub>2</sub> ▶ CO<sub>2</sub>

## EXAMPLES

**F<sup>2</sup>**

SUPERSCRIPIT

*m*<sub>3</sub> ▶ *m*<sup>3</sup>

**N<sub>2</sub>**

SUBSCRIPT

*N*2 ▶ *N*<sub>2</sub>

**ΣΣ**

MATHEMATICAL GREEK

*π*Σ ▶ *π*Σ

**Jj**

ACCESS ALL ALTERNATES

1 ▶ <sup>1</sup><sub>1</sub><sub>1</sub>

**gg**

STYLISTIC ALTERNATES

*g*ℚ*k* ▶ *g*&*k*

SECTION D  
LANGUAGE  
SUPPORT

SUPPORTED  
CODE PAGES  
OPENTYPE STANDARD



**MACOS**  
MACOS ROMAN  
**IBM**  
IBM-37 UNITED STATES - EBCDIC (IBM-28709)  
IBM-273 GERMANY - EBCDIC  
IBM-277 DENMARK, NORWAY - EBCDIC  
IBM-278 FINLAND, SWEDEN - EBCDIC  
IBM-280 ITALY - EBCDIC  
IBM-282  
IBM-284 SPAIN, LATIN AMERICA - EBCDIC

IBM-285 UNITED KINGDOM - EBCDIC  
IBM-297 FRANCE - EBCDIC  
IBM-500 INTERNATIONAL - EBCDIC  
IBM-871 ICELAND - EBCDIC  
IBM-1047 OPEN SYSTEMS - EBCDIC

**WINDOWS**  
MS WINDOWS 1252 LATIN 1  
**ISO**  
ISO 8859-1 W EU LATIN 1

ADDITIONAL  
SUPPORTED  
CODE PAGES  
OPENTYPE PRO



**MACOS**  
MACOS CENTRAL EUROPE  
MACOS CYRILLIC  
MACOS GREEK  
MACOS UKRAINIAN  
**IBM**  
IBM-875 GREECE - EBCDIC  
IBM-921 BALTIC  
IBM-1025 CYRILLIC - EBCDIC  
IBM-1112 BALTIC - EBCDIC  
IBM-1123  
IBM-1124  
**OTHER**  
HARWELL GREEK NO 2  
**WINDOWS**  
MS WINDOWS 1250 EASTERN EUROPEAN

MS WINDOWS 1251 CYRILLIC  
MS WINDOWS 1253 GREEK  
MS WINDOWS 1254 TURKISH  
MS WINDOWS 1257 BALTIC  
**WINDOWS PARAGRAPH**  
MS WINDOWS PARAGRAPH FRENCH-CYRILLIC  
MS WINDOWS PARAGRAPH FINNISH-CYRILLIC  
MS WINDOWS PARAGRAPH GERMAN-CYRILLIC  
**ISO**  
ISO 8859-2 C EU LATIN 2  
ISO 8859-3 TU, MALT, GAL, ESP LATIN 3  
ISO 8859-5 CYRILLIC  
ISO 8859-9 W EU+TURKISH LATIN 5  
ISO 8859-10 SCANDINAVIAN LATIN 6

**SUPPORTED  
LANGUAGES  
OPENTYPE STANDARD**

**STD**

ALBANIAN  
BRETON  
CATALAN  
DANISH  
DUTCH  
ENGLISH  
FINNISH  
FRENCH  
GERMAN

ICELANDIC  
IRISH  
ITALIAN  
NORWEGIAN  
PORTUGUESE  
RHAETO-ROMANCE  
SPANISH  
SWEDISH

**ADDITIONAL  
SUPPORTED  
LANGUAGES  
OPENTYPE PRO**

**PRO**

ABASINIAN  
ADYGEISH  
AVARISH  
BALKARIAN  
BULGARIAN  
BYELORUSSIAN (BELARUSIAN)  
CHECHENISH  
CROATIAN  
CZECH  
DARGINISH  
ESTONIAN  
GREEK  
HUNGARIAN  
INGUSHIAN  
KABARDINO-CHERKESIAN  
KUMYKISH  
KURDISH  
LAKISH

LATVIAN (LETTISH)  
LESGINIAN  
LITHUANIAN  
MACEDONIAN  
MOLDAVIAN  
MORDOVSKO-ERSATIAN  
MORDOVSKO-MOKSHANIAN  
NANAISH  
NENISH  
NIVKH  
POLISH  
ROMANIAN  
SLOVAK  
SLOVENIAN  
SORBIAN LOWER  
SORBIAN UPPER  
TURKISH



**SUPPORTED  
UNICODE RANGES**

TITLE	NUMBER OF CHARACTERS		EXAMPLES
	OT	PRO	
BASIC LATIN	97	97	! " # ... / } ~
LATIN-1 SUPPLEMENT	96	96	ı ç £ ... ý þ ÿ
LATIN EXTENDED-A	10	123	Ā ā Ą ... ȳ ž Ẓ ẓ
LATIN EXTENDED-B	2	6	ƒ Š š Ţ ţ ı
SPACING MODIFIER LETTERS	8	8	ˆ ˇ ˘ ... ˜ ˝
GREEK AND COPTIC	4	72	´ ¨ Å ó ú ó
CYRILLIC		94	Ё Ъ Ы ъ Ъ ъ
LATIN EXTENDED ADDITIONAL		8	Ẁ ẁ Ẃ ẃ Ỳ ỳ
GENERAL PUNCTUATION	16	17	— — — ... ‹ › ⁄
SUPERSCRIPTS AND SUBSCRIPTS	21	21	⁰ ⁴ ⁵ ... ₇ ₈ ₉
CURRENCY SYMBOLS	1	1	€
LETTERLIKE SYMBOLS	3	4	Nº ® ™ Ω
MATHEMATICAL OPERATORS	16	16	∂ Δ ∏ ... ≤ ≥ ·
GEOMETRIC SHAPES	1	1	◊
ALPHABETIC PRESENTATION FORMS 5		5	ff fi fl ffi ffl

*Shag pile i13*

*AaBbCcDdEeFfGgHhIiJjKkLlMmNn*

*abcdefghijklmnopqrstuvwxyz 0123456789*

*ABCDEFGHIJKLMNOPQRSTUVWXYZ*

FF Kievit OT Italic 14/16 pt

*SEMPRE DOMENICA PRENDERÀ VITA una giornata Gut getarnt im  
Neptungras steht ein Kuckuckslipp. Serán, a juicio de los cientí.cos, tres  
épocas Onks tää vika kysymys. Hän on työskennellyt Il y aurait bien de*

FF Kievit OT Italic 12/14 pt

*SEMPRE DOMENICA PRENDERÀ VITA una giornata Gut getarnt im Neptungras steht  
ein Kuckuckslipp. Serán, a juicio de los cientí.cos, tres épocas Onks tää vika kysymys.  
Hän on työskennellyt Il y aurait bien de choses à dire là-dessus. Several tenors sing*

FF Kievit OT Italic 10/12 pt

<i>SEMPRE DOMENICA PRENDERÀ VITA una giornata Gut getarnt im Neptungras steht ein Kuckuckslipp. Serán, a juicio de los cientí.cos, tres épocas Onks tää vika kysymys. Hän on</i>	<i>työskennellyt Il y aurait bien de choses à dire là- dessus. Several tenors sing in culturally void display. Eigentlich wollen die Leute nur die Sonne genießen. Ayer, todavía en pleno echazo,</i>
--	---

FF Kievit OT Italic 8/10 pt

<i>SEMPRE DOMENICA PRENDERÀ VITA una giornata Gut getarnt im Neptungras steht ein Kuckuckslipp. Serán, a juicio de los cientí.cos, tres épocas Onks tää</i>	<i>vika kysymys. Hän on työskennellyt Il y aurait bien de choses à dire là-dessus. Several tenors sing in culturally void display. Eigentlich wollen die Leute nur</i>	<i>die Sonne genießen. Ayer, todavía en pleno echazo, celebraban su aniversario de boda. Facile à dire qu'à faire. Suuri kiitos siitä heille.</i>
---	--	---